

WE ARE
economies
OF SCALE

WE ARE THE
support
YOU NEED

WE ARE THE
experts
IN MUNICIPALITIES

WE ARE YOUR
advocate



Village of Ryley		Statement Date:	Nov 07, 2019
PO Box 230 Ryley AB T0B 4A0	Account Number:	C001478-01	
	Invoice Number:	19-1031234	
	Balance Owing:	\$ 6,797.39	

Page 1 of 40

INVOICE SUMMARY

	Charges
Gas Commodity	\$ 755.50
Gas Distribution Charges	\$ 360.68
Municipal Franchise Fee	\$ 28.21
Carbon Levy	\$ 0.00
Gas Total (148.86 GJ)	\$ 1,144.39
Power Commodity	\$ 1,087.58
Distribution and Transmission	\$ 4,126.00
Local Access Fee	\$ 115.70
Power Total (10,695.44 kWh)	\$ 5,329.28
Total Charges	\$ 6,473.67
Total GST (Registration #: 862095098RT001)	\$ 323.72
Total Current Charges	\$ 6,797.38
Total Previous Charges	\$ 6,366.43
Less Payments	\$ 6,366.43
Balance Forward	\$ 0.00
Balance Owing	\$ 6,797.39

DO NOT PAY. This is for your information only

The following payment of \$6,797.38 will be automatically withdrawn on November 28, 2019

Messages:

Thank you for using Preauthorized Payment.

GST Registration Number: 862095098RT001

For billing inquiries, contact AMSC Customer Care at 310-AUMA or via email at amscenergy@auma.ca

Please return this portion with your payment

Please remit your payment to :

Alberta Municipal Services Corporation
PO Box 9698 STN M
Calgary, AB. T2P 0E9

Account Number:	C001478-01
Invoice Number:	19-1031234
Balance Owing:	\$6,797.39
Amount Paid:	

DO NOT PAY. This is for your information only

The following payment of \$6,797.38 will be automatically withdrawn on November 28, 2019

10202 E D 00004
Village of Ryley
PO Box 230
Ryley AB T0B 4A0

WE ARE
economies
OF SCALE

WE ARE THE
support
YOU NEED

WE ARE THE
experts
IN MUNICIPALITIES

WE ARE YOUR
advocate

Village of Ryley

Statement Date:

Nov 07, 2019

PO Box 230
Ryley AB T0B 4A0

Account Number:

C001478-01

Invoice Number:

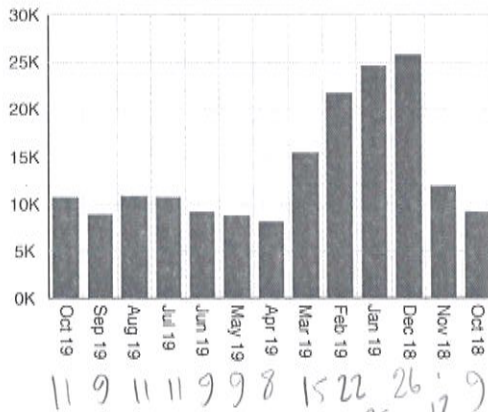
19-1031234

Balance Owning:

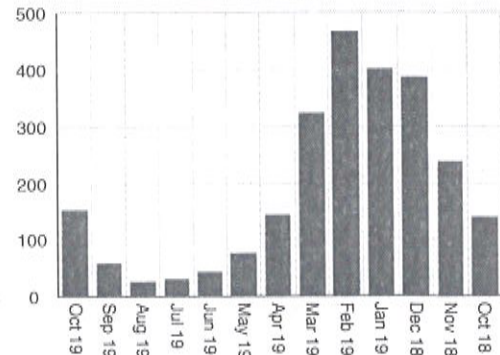
\$ 6,797.39

Page 2 of 40

Power in kWh



Gas in GJ



Block Products

Block products are the following Fixed Price products

- Fixed Baseload or 7x24 hours;
- Fixed On-Peak: 6x16 HE 8 to HE 23, Monday to Saturday, excluding NERC Holidays;
- Fixed Extended-Peak: 7x16 HE 8 to HE 23, Sunday to Saturday;
- Fixed Extended Off-Peak: 7x8, being all hours that are not Fixed Extended-Peak hours;
- Fixed Super-Peak: 5x13 HE 9 to HE 21, Monday to Friday, excluding NERC Holidays;

Consumption Meter

Consumption Meters are cumulative electrical energy meter that records consumption (kWh) and peak demand information.

Distribution Company

A Distribution Company is the wire Owner, Wires Services Provider, Load Settlement Agent, Meter Service Provider and/or Meter Data Manager.

Electricity Usage Profile

Electricity Usage Profiles are the pattern in which a customer consumes electrical energy on an hourly basis derived from their individual meters or aggregated meters at the site(s) which may be a Deemed Profile.

Distribution

Distribution is the cost of building, operating and maintaining the local distribution system.

Transmission

Transmission is the cost of building, operating and maintaining the provincial power grid.

Fixed Delivery Charge

Fixed Delivery Charges are the costs of building and maintaining the local and p grids to deliver electricity to consumers regardless of consumption.

Variable Delivery Charge

Variable Delivery Charges the cost for the operation of the distribution and transmission systems based on the amount of energy consumed.

Rate Rider(s)

A rider is a temporary credit or charge approved by the regulator. Riders occur when the actual costs incurred by a utility to provide electricity service to their customers differ from their approved rates. Delivery rate riders are associated with distribution and transmission costs. Energy riders are no longer allowed, but the possibility of delivery rate riders still remains because distribution and transmission rates are often based on forecasted costs that may differ from actual costs.

Local Access Fee / Municipal Franchise Fee

Your distribution company collects this fee and remits it to your local government (ie. city, town, village) to enable access to municipal land for their power lines and gas pipelines.

Carbon Levy

A charge applied to fuels that emit greenhouse gases, including diesel, gasoline, natural gas and propane.

For additional information, please visit climate.alberta.ca or call 310-0000.

Goods and Services Tax

The five per cent GST calculation is based on the total costs in your bill. This results in a corresponding increase when the energy charge or other components of the bill rise.

Sales of RECS / Green Power

This is electricity produced from a "renewable" or environmentally friendly source such as hydro, biomass, wind or solar.

Bill Payment Options:

- Make paying your bill even easier with Pre-Authorized Payment by contacting 310-AUMA
- Through your bank: in person, by telephone banking, or by online banking
- By Mail to Alberta Municipal Services Corporation

PO Box 9698 STN M
Calgary, AB. T2P 0E9

WE ARE
economies
OF SCALE

WE ARE THE
support
YOU NEED

WE ARE THE
experts
IN MUNICIPALITIES

WE ARE YOUR
advocate

Village of Ryley

Statement Date:

Nov 07, 2019

PO Box 230
Ryley AB T0B 4A0

Account Number:

C001478-01

Invoice Number:

19-1031234

Balance Owing:

\$ 6,797.39

Page 3 of 40

Service/Site: Municipal Bldg
0001033146564
5005 50 ST
Village of Ryley AB X0X 0X0
Rate: Low Use

In case of emergency at your site please contact your service provider ATCO Gas (North) at (780) 420-5585.

Gas Commodity

Charges

Gas Commodity - Current (Oct 01, 2019-Oct 31, 2019)

	Usage	Price		
GAS - Admin: Imbalance Fee, B1	5.23		\$	0.00
GAS - Admin: Retail Service Charge			\$	20.00
GAS - Admin: Third Party Broker Fee, B1	16.59		\$	0.00
GAS - Block: Fixed, B1	12.31	4.44000	\$	54.65
GAS - Imbalance: Daily Index Purchase, B1	4.75		\$	11.36
GAS - Imbalance: Daily Index Sale, B1	-0.48		\$	-0.80
GAS - UFG, ATCO North, B1	0.13		\$	0.28
			\$	85.49

Gas Commodity - Prior Period Adjustments (Jun 01, 2019-Sep 30, 2019)

	Usage	Price		
ATCO Gas Imbalance	5.61	-0.01337	\$	-0.07
GAS - Admin: Imbalance Fee, S1	0.11		\$	0.00
GAS - Admin: Imbalance Fee, S2	-0.44		\$	0.00
GAS - Admin: Imbalance Fee, S3			\$	0.00
GAS - Admin: Retail Service Charge			\$	0.00
GAS - Admin: Third Party Broker Fee, S1	-0.03		\$	0.00
GAS - Admin: Third Party Broker Fee, S2	-0.56		\$	0.00
GAS - Admin: Third Party Broker Fee, S3			\$	0.00
GAS - Block: Fixed, S1	0.02	4.44000	\$	0.11
GAS - Block: Fixed, S2	-0.12	4.44000	\$	-0.53
GAS - Block: Fixed, S3		4.44000	\$	0.00
GAS - Imbalance: Daily Index Purchase, S1	0.03		\$	0.03
GAS - Imbalance: Daily Index Purchase, S2	-0.44		\$	-0.27
GAS - Imbalance: Daily Index Purchase, S3			\$	0.00
GAS - Imbalance: Daily Index Sale, S1	-0.08		\$	-0.02
GAS - Imbalance: Daily Index Sale, S2			\$	0.00
GAS - Imbalance: Daily Index Sale, S3			\$	0.00
GAS - UFG, ATCO North, S1			\$	0.00
GAS - UFG, ATCO North, S2	-0.00		\$	0.00
GAS - UFG, ATCO North, S3			\$	0.00
			\$	-0.75

Total Gas Commodity

\$ 84.74

WE ARE
economies
OF SCALE

WE ARE THE
support
YOU NEED

WE ARE THE
experts
IN MUNICIPALITIES

WE ARE YOUR
advocate

Village of Ryley		Statement Date:	Nov 07, 2019
PO Box 230 Ryley AB T0B 4A0	Account Number:	C001478-01	
	Invoice Number:	19-1031234	
	Balance Owning:	\$ 6,797.39	

Page 4 of 40

Service/Site:	Municipal Bldg 0001033146564 5005 50 ST Village of Ryley AB X0X 0X0
Rate:	Low Use
In case of emergency at your site please contact your service provider ATCO Gas (North) at (780) 420-5585.	

Gas Distribution Charges

Charges

Gas Distribution Charges - (Sep 08, 2019-Oct 04, 2019)

GAS - Third Party: Distribution and Transmission, B1	\$	30.42
GAS - Third Party: Municipal Franchise Fee; paid to Ryley	\$	3.77
GAS - Third Party: Riders, B1	\$	12.95
	\$	47.14

Total Gas Distribution Charges	\$	47.14
---------------------------------------	----	--------------

GAS-Third Party: Carbon Levy	\$	0.00
------------------------------	----	------

Site Subtotal:	\$	131.88
-----------------------	----	---------------

Site GST:	\$	6.60
------------------	----	-------------

Total Charges for 0001033146564-Municipal Bldg	\$	138.48
---	----	---------------

87% Admin - 114.74
PW - 17.14

WE ARE
economies
OF SCALE

WE ARE THE
support
YOU NEED

WE ARE THE
experts
IN MUNICIPALITIES

WE ARE YOUR
advocate

Village of Ryley		Statement Date:	Nov 07, 2019
PO Box 230 Ryley AB T0B 4A0	Account Number:	C001478-01	
	Invoice Number:	19-1031234	
	Balance Owing:	\$ 6,797.39	

Page 5 of 40

Service/Site:	New Public Works Shop 0001166009511 4928 51 ST Ryley AB T0B4A0
Rate:	Low Use
In case of emergency at your site please contact your service provider ATCO Gas (North) at (780) 420-5585.	

Gas Commodity

Gas Commodity			Charges	
Gas Commodity - Current (Oct 01, 2019-Oct 31, 2019)			Usage	Price
GAS - Admin: Imbalance Fee, B1			2.58	
GAS - Admin: Retail Service Charge				
GAS - Admin: Third Party Broker Fee, B1			8.12	
GAS - Block: Fixed, B1			5.97	4.44000
GAS - Imbalance: Daily Index Purchase, B1			2.36	
GAS - Imbalance: Daily Index Sale, B1			-0.21	
GAS - UFG, ATCO North, B1			0.06	



481 - 20 - 18 - 28 - 000135

WE ARE
economies
OF SCALE

WE ARE THE
support
YOU NEED

WE ARE THE
experts
IN MUNICIPALITIES

WE ARE YOUR
advocate

Village of Ryley		Statement Date:	Nov 07, 2019
PO Box 230 Ryley AB T0B 4A0	Account Number:	C001478-01	
	Invoice Number:	19-1031234	
	Balance Owning:	\$ 6,797.39	

Page 6 of 40

Service/Site:	New Public Works Shop 0001166009511 4928 51 ST Ryley AB T0B4A0
Rate:	Low Use
In case of emergency at your site please contact your service provider ATCO Gas (North) at (780) 420-5585.	

Gas Distribution Charges

Gas Distribution Charges - (Sep 08, 2019-Oct 04, 2019)

		Charges
GAS - Third Party: Distribution and Transmission, B1	\$	26.88
GAS - Third Party: Municipal Franchise Fee; paid to Ryley	\$	3.02
GAS - Third Party: Riders, B1	\$	7.95
	\$	37.85
Total Gas Distribution Charges	\$	37.85
GAS-Third Party: Carbon Levy	\$	0.00
Site Subtotal:	\$	90.28
Site GST:	\$	4.52
Total Charges for 0001166009511-New Public Works Shop	\$	94.80

WE ARE
economies
OF SCALE

WE ARE THE
support
YOU NEED

WE ARE THE
experts
IN MUNICIPALITIES

WE ARE YOUR
advocate

Village of Ryley		Statement Date:	Nov 07, 2019
PO Box 230 Ryley AB T0B 4A0	Account Number:	C001478-01	
	Invoice Number:	19-1031234	
	Balance Owning:	\$ 6,797.39	

Page 7 of 40

Service/Site:	Public Works Shop 0001166023217 4924 51 ST Ryley AB T0B4A0
Rate:	Low Use
In case of emergency at your site please contact your service provider ATCO Gas (North) at (780) 420-5585.	

Gas Commodity

Gas Commodity			Charges	
Gas Commodity - Current (Oct 01, 2019-Oct 31, 2019)			Usage	Price
GAS - Admin: Imbalance Fee, B1			4.82	
GAS - Admin: Retail Service Charge				
GAS - Admin: Third Party Broker Fee, B1			15.11	
GAS - Block: Fixed, B1			11.03	4.44000
GAS - Imbalance: Daily Index Purchase, B1			4.45	
GAS - Imbalance: Daily Index Sale, B1			-0.37	
GAS - UFG, ATCO North, B1			0.12	

WE ARE
economies
OF SCALE

WE ARE THE
support
YOU NEED

WE ARE THE
experts
IN MUNICIPALITIES

WE ARE YOUR
advocate

Village of Ryley		Statement Date:	Nov 07, 2019
PO Box 230 Ryley AB T0B 4A0	Account Number:	C001478-01	
	Invoice Number:	19-1031234	
	Balance Owing:	\$ 6,797.39	

Page 8 of 40

Service/Site:	Public Works Shop 0001166023217 4924 51 ST Ryley AB T0B4A0
Rate:	Low Use
In case of emergency at your site please contact your service provider ATCO Gas (North) at (780) 420-5585.	

Gas Distribution Charges

Gas Distribution Charges - (Sep 08, 2019-Oct 04, 2019)

	Charges
GAS - Third Party: Distribution and Transmission, B1	\$ 29.53
GAS - Third Party: Municipal Franchise Fee; paid to Ryley	\$ 3.58
GAS - Third Party: Riders, B1	\$ 11.70
	\$ 44.81
Total Gas Distribution Charges	\$ 44.81
GAS-Third Party: Carbon Levy	\$ 0.00
Site Subtotal:	\$ 121.51
Site GST:	\$ 6.07
Total Charges for 0001166023217-Public Works Shop	\$ 127.58

WE ARE
economies
OF SCALE

WE ARE THE
support
YOU NEED

WE ARE THE
experts
IN MUNICIPALITIES

WE ARE YOUR
advocate

Village of Ryley		Statement Date:	Nov 07, 2019
PO Box 230 Ryley AB T0B 4A0	Account Number:	C001478-01	
	Invoice Number:	19-1031234	
	Balance Owing:	\$ 6,797.39	

Page 9 of 40

Service/Site:	Skating Rink 0001380024513 4835 53 AVE Ryley AB T0B4A0
Rate:	Low Use
In case of emergency at your site please contact your service provider ATCO Gas (North) at (780) 420-5585.	

Gas Commodity

			Charges	
Gas Commodity - Current (Oct 01, 2019-Oct 31, 2019)				
	Usage	Price		
GAS - Admin: Imbalance Fee, B1	1.88		\$	0.00
GAS - Admin: Retail Service Charge			\$	20.00
GAS - Admin: Third Party Broker Fee, B1	5.70		\$	0.00
GAS - Block: Fixed, B1	3.98	4.44000	\$	17.67
GAS - Imbalance: Daily Index Purchase, B1	1.80		\$	4.37
GAS - Imbalance: Daily Index Sale, B1	-0.08		\$	-0.17
GAS - UFG, ATCO North, B1	0.04		\$	0.10
			\$	41.97
Gas Commodity - Prior Period Adjustments (Jun 01, 2019-Sep 30, 2019)				
	Usage	Price		
ATCO Gas Imbalance	1.87	-0.01337	\$	-0.03
GAS - Admin: Imbalance Fee, S1	-0.03		\$	0.00
GAS - Admin: Imbalance Fee, S2	-0.41		\$	0.00
GAS - Admin: Imbalance Fee, S3			\$	0.00
GAS - Admin: Retail Service Charge			\$	0.00
GAS - Admin: Third Party Broker Fee, S1	-0.10		\$	0.00
GAS - Admin: Third Party Broker Fee, S2	-0.74		\$	0.00
GAS - Admin: Third Party Broker Fee, S3			\$	0.00
GAS - Block: Fixed, S1	-0.14	4.44000	\$	-0.61
GAS - Block: Fixed, S2	-0.33	4.44000	\$	-1.48
GAS - Block: Fixed, S3		4.44000	\$	0.00
GAS - Imbalance: Daily Index Purchase, S1	0.00		\$	0.00
GAS - Imbalance: Daily Index Purchase, S2	-0.41		\$	-0.24
GAS - Imbalance: Daily Index Purchase, S3			\$	0.00
GAS - Imbalance: Daily Index Sale, S1	0.03		\$	0.02
GAS - Imbalance: Daily Index Sale, S2			\$	0.00
GAS - Imbalance: Daily Index Sale, S3			\$	0.00
GAS - UFG, ATCO North, S1	-0.00		\$	0.00
GAS - UFG, ATCO North, S2	-0.01		\$	0.00
GAS - UFG, ATCO North, S3			\$	0.00
			\$	-2.34
Total Gas Commodity			\$	39.63

WE ARE
economies
OF SCALE

WE ARE THE
support
YOU NEED

WE ARE THE
experts
IN MUNICIPALITIES

WE ARE YOUR
advocate

Village of Ryley		Statement Date:	Nov 07, 2019
PO Box 230 Ryley AB T0B 4A0	Account Number:	C001478-01	
	Invoice Number:	19-1031234	
	Balance Owning:	\$ 6,797.39	

Page 10 of 40

Service/Site:	Skating Rink 0001380024513 4835 53 AVE Ryley AB T0B4A0
Rate:	Low Use
In case of emergency at your site please contact your service provider ATCO Gas (North) at (780) 420-5585.	

Gas Distribution Charges

Gas Distribution Charges - (Sep 08, 2019-Oct 04, 2019)

		Charges
GAS - Third Party: Distribution and Transmission, B1	\$	27.77
GAS - Third Party: Municipal Franchise Fee; paid to Ryley	\$	3.21
GAS - Third Party: Riders, B1	\$	9.21
	\$	40.19
Total Gas Distribution Charges	\$	40.19
GAS-Third Party: Carbon Levy	\$	0.00
Site Subtotal:	\$	79.82
Site GST:	\$	3.99
Total Charges for 0001380024513-Skating Rink	\$	83.81

WE ARE
economies
OF SCALE

WE ARE THE
support
YOU NEED

WE ARE THE
experts
IN MUNICIPALITIES

WE ARE YOUR
advocate

Village of Ryley		Statement Date:	Nov 07, 2019
PO Box 230 Ryley AB T0B 4A0	Account Number:	C001478-01	
	Invoice Number:	19-1031234	
	Balance Owning:	\$ 6,797.39	

Page 11 of 40

Service/Site:	Lift Station, 7-31-7920397 0001413449210 Lift Station, SW 10 050 17 4 Tofield
Rate:	Low Use
In case of emergency at your site please contact your service provider ATCO Gas (North) at (780) 420-5585.	

Gas Commodity

Gas Commodity - Current (Oct 01, 2019-Oct 31, 2019)

	Usage	Price	Charges	
GAS - Admin: Imbalance Fee, B1	5.18		\$	0.00
GAS - Admin: Retail Service Charge			\$	20.00
GAS - Admin: Third Party Broker Fee, B1	16.48		\$	0.00
GAS - Block: Fixed, B1	12.20	4.44000	\$	54.18
GAS - Imbalance: Daily Index Purchase, B1	4.73		\$	11.29
GAS - Imbalance: Daily Index Sale, B1	-0.45		\$	-0.76
GAS - UFG, ATCO North, B1	0.13		\$	0.28
			\$	84.99

Gas Commodity - Prior Period Adjustments (Jun 01, 2019-Sep 30, 2019)

	Usage	Price		
ATCO Gas Imbalance	2.71	-0.01337	\$	-0.04
GAS - Admin: Imbalance Fee, S1	0.10		\$	0.00
GAS - Admin: Imbalance Fee, S2	0.02		\$	0.00
GAS - Admin: Imbalance Fee, S3			\$	0.00
GAS - Admin: Retail Service Charge			\$	0.00
GAS - Admin: Third Party Broker Fee, S1	0.04		\$	0.00
GAS - Admin: Third Party Broker Fee, S2	0.12		\$	0.00
GAS - Admin: Third Party Broker Fee, S3			\$	0.00
GAS - Block: Fixed, S1	0.11	4.44000	\$	0.49
GAS - Block: Fixed, S2	0.10	4.44000	\$	0.44
GAS - Block: Fixed, S3		4.44000	\$	0.00
GAS - Imbalance: Daily Index Purchase, S1	0.02		\$	0.00
GAS - Imbalance: Daily Index Purchase, S2	0.02		\$	0.01
GAS - Imbalance: Daily Index Purchase, S3			\$	0.00
GAS - Imbalance: Daily Index Sale, S1	-0.08		\$	-0.03
GAS - Imbalance: Daily Index Sale, S2			\$	0.00
GAS - Imbalance: Daily Index Sale, S3			\$	0.00
GAS - UFG, ATCO North, S1			\$	0.00
GAS - UFG, ATCO North, S2	0.00		\$	0.00
GAS - UFG, ATCO North, S3			\$	0.00
			\$	0.87

Total Gas Commodity

\$ 85.86

WE ARE
economies
OF SCALE

WE ARE THE
support
YOU NEED

WE ARE THE
experts
IN MUNICIPALITIES

WE ARE YOUR
advocate

Village of Ryley		Statement Date:	Nov 07, 2019
PO Box 230 Ryley AB T0B 4A0	Account Number:	C001478-01	
	Invoice Number:	19-1031234	
	Balance Owing:	\$ 6,797.39	

Page 12 of 40

Service/Site:	Lift Station, 7-31-7920397 0001413449210 Lift Station, SW 10 050 17 4 Tofield
Rate:	Low Use
In case of emergency at your site please contact your service provider ATCO Gas (North) at (780) 420-5585.	

Gas Distribution Charges

Gas Distribution Charges - (Sep 08, 2019-Oct 04, 2019)

	Charges
GAS - Third Party: Distribution and Transmission, B1	\$ 29.53
GAS - Third Party: Riders, B1	\$ 6.26
Total Gas Distribution Charges	\$ 35.79
GAS-Third Party: Carbon Levy	\$ 0.00
Site Subtotal:	\$ 121.65
Site GST:	\$ 6.08
Total Charges for 0001413449210-Lift Station, 7-31-7920397	\$ 127.73



WE ARE
economies
OF SCALE



WE ARE THE
support
YOU NEED

WE ARE THE
experts
IN MUNICIPALITIES

WE ARE YOUR
advocate

Village of Ryley		Statement Date:	Nov 07, 2019
PO Box 230 Ryley AB T0B 4A0	Account Number:	C001478-01	
	Invoice Number:	19-1031234	
	Balance Owing:	\$ 6,797.39	

Page 13 of 40

Service/Site:	Curling Rink 0001422010213 5117 49 ST Ryley AB T0B4A0
Rate:	Low Use
In case of emergency at your site please contact your service provider ATCO Gas (North) at (780) 420-5585.	

Gas Commodity

Gas Commodity			Charges	
Gas Commodity - Current (Oct 01, 2019-Oct 31, 2019)			Usage	Price
GAS - Admin: Imbalance Fee, B1			13.46	\$ 0.00
GAS - Admin: Retail Service Charge				\$ 20.00
GAS - Admin: Third Party Broker Fee, B1			42.72	\$ 0.00
GAS - Block: Fixed, B1			31.72	\$ 4.44000 140.85
GAS - Imbalance: Daily Index Purchase, B1			12.23	\$ 29.20
GAS - Imbalance: Daily Index Sale, B1			-1.23	\$ -2.06
GAS - UFG, ATCO North, B1			0.33	\$ 0.71
				\$ 188.70
Gas Commodity - Prior Period Adjustments (Jun 01, 2019-Sep 30, 2019)			Usage	Price
ATCO Gas Imbalance			15.58	\$ -0.01337 -0.21
GAS - Admin: Imbalance Fee, S1			0.45	\$ 0.00
GAS - Admin: Imbalance Fee, S2			-0.27	\$ 0.00
GAS - Admin: Imbalance Fee, S3				\$ 0.00
GAS - Admin: Retail Service Charge				\$ 0.00
GAS - Admin: Third Party Broker Fee, S1			0.16	\$ 0.00
GAS - Admin: Third Party Broker Fee, S2			0.39	\$ 0.00
GAS - Admin: Third Party Broker Fee, S3				\$ 0.00
GAS - Block: Fixed, S1			0.48	\$ 4.44000 2.11
GAS - Block: Fixed, S2			0.66	\$ 4.44000 2.93
GAS - Block: Fixed, S3				\$ 4.44000 0.00
GAS - Imbalance: Daily Index Purchase, S1			0.07	\$ 0.07
GAS - Imbalance: Daily Index Purchase, S2			-0.27	\$ -0.22
GAS - Imbalance: Daily Index Purchase, S3				\$ 0.00
GAS - Imbalance: Daily Index Sale, S1			-0.38	\$ -0.11
GAS - Imbalance: Daily Index Sale, S2				\$ 0.00
GAS - Imbalance: Daily Index Sale, S3				\$ 0.00
GAS - UFG, ATCO North, S1			0.00	\$ 0.00
GAS - UFG, ATCO North, S2			0.00	\$ 0.00
GAS - UFG, ATCO North, S3				\$ 0.00
				\$ 4.57
Total Gas Commodity				\$ 193.27



19-1031234-000143

WE ARE
economies
OF SCALE

WE ARE THE
support
YOU NEED

WE ARE THE
experts
IN MUNICIPALITIES

WE ARE YOUR
advocate

Village of Ryley		Statement Date:	Nov 07, 2019
PO Box 230 Ryley AB T0B 4A0	Account Number:	C001478-01	
	Invoice Number:	19-1031234	
	Balance Owning:	\$ 6,797.39	

Page 14 of 40

Service/Site:	Curling Rink 0001422010213 5117 49 ST Ryley AB T0B4A0
Rate:	Low Use
In case of emergency at your site please contact your service provider ATCO Gas (North) at (780) 420-5585.	

Gas Distribution Charges

Charges

Gas Distribution Charges - (Sep 10, 2019-Oct 07, 2019)

GAS - Third Party: Distribution and Transmission, B1	\$	35.77
GAS - Third Party: Municipal Franchise Fee; paid to Ryley	\$	4.79
GAS - Third Party: Riders, B1	\$	19.39
	\$	59.95

Total Gas Distribution Charges	\$	59.95
---------------------------------------	----	-------

GAS-Third Party: Carbon Levy	\$	0.00
------------------------------	----	------

Site Subtotal:	\$	253.22
-----------------------	----	--------

Site GST:	\$	12.66
------------------	----	-------

Total Charges for 0001422010213-Curling Rink	\$	265.88
---	----	--------

WE ARE
economies
OF SCALE

WE ARE THE
support
YOU NEED

WE ARE THE
experts
IN MUNICIPALITIES

WE ARE YOUR
advocate

Village of Ryley

Statement Date:

Nov 07, 2019

PO Box 230
Ryley AB T0B 4A0

Account Number:

C001478-01

Invoice Number:

19-1031234

Balance Owning:

\$ 6,797.39

Page 15 of 40

Service/Site: McPherson Library

0001440326418

5113 50 ST

Ryley AB T0B4A0

Rate: Low Use

In case of emergency at your site please contact your service provider ATCO Gas (North) at (780) 420-5585.

Gas Commodity

Charges

Gas Commodity - Current (Oct 01, 2019-Oct 31, 2019)

	Usage	Price		
GAS - Admin: Imbalance Fee, B1	4.03		\$	0.00
GAS - Admin: Retail Service Charge			\$	20.00
GAS - Admin: Third Party Broker Fee, B1	12.75		\$	0.00
GAS - Block: Fixed, B1	9.41	4.44000	\$	41.78
GAS - Imbalance: Daily Index Purchase, B1	3.69		\$	8.82
GAS - Imbalance: Daily Index Sale, B1	-0.35		\$	-0.59
GAS - UFG, ATCO North, B1	0.10		\$	0.21
			\$	70.22

Gas Commodity - Prior Period Adjustments (Jun 01, 2019-Sep 30, 2019)

	Usage	Price		
ATCO Gas Imbalance	2.19	-0.01337	\$	-0.03
GAS - Admin: Imbalance Fee, S1	0.04		\$	0.00
GAS - Admin: Imbalance Fee, S2	-0.01		\$	0.00
GAS - Admin: Imbalance Fee, S3			\$	0.00
GAS - Admin: Retail Service Charge			\$	0.00
GAS - Admin: Third Party Broker Fee, S1	0.02		\$	0.00
GAS - Admin: Third Party Broker Fee, S2	0.07		\$	0.00
GAS - Admin: Third Party Broker Fee, S3			\$	0.00
GAS - Block: Fixed, S1	0.02	4.44000	\$	0.08
GAS - Block: Fixed, S2	0.08	4.44000	\$	0.33
GAS - Block: Fixed, S3		4.44000	\$	0.00
GAS - Imbalance: Daily Index Purchase, S1	0.02		\$	0.02
GAS - Imbalance: Daily Index Purchase, S2	-0.01		\$	-0.01
GAS - Imbalance: Daily Index Purchase, S3			\$	0.00
GAS - Imbalance: Daily Index Sale, S1	-0.02		\$	-0.01
GAS - Imbalance: Daily Index Sale, S2			\$	0.00
GAS - Imbalance: Daily Index Sale, S3			\$	0.00
GAS - UFG, ATCO North, S1			\$	0.00
GAS - UFG, ATCO North, S2			\$	0.00
GAS - UFG, ATCO North, S3			\$	0.00
			\$	0.38

Total Gas Commodity

\$ 70.60



10 YRI - 20 - 13 - 23 - 000145

WE ARE
economies
OF SCALE

WE ARE THE
support
YOU NEED

WE ARE THE
experts
IN MUNICIPALITIES

WE ARE YOUR
advocate

Village of Ryley		Statement Date:	Nov 07, 2019
PO Box 230 Ryley AB T0B 4A0	Account Number:	C001478-01	
	Invoice Number:	19-1031234	
	Balance Owing:	\$ 6,797.39	

Page 16 of 40

Service/Site:	McPherson Library 0001440326418 5113 50 ST Ryley AB T0B4A0
Rate:	Low Use
In case of emergency at your site please contact your service provider ATCO Gas (North) at (780) 420-5585.	

Gas Distribution Charges

Gas Distribution Charges - (Sep 08, 2019-Oct 04, 2019)

	Charges
GAS - Third Party: Distribution and Transmission, B1	\$ 31.30
GAS - Third Party: Municipal Franchise Fee; paid to Ryley	\$ 3.95
GAS - Third Party: Riders, B1	\$ 14.18
Total Gas Distribution Charges	\$ 49.43
GAS-Third Party: Carbon Levy	\$ 0.00
Site Subtotal:	\$ 120.03
Site GST:	\$ 6.00
Total Charges for 0001440326418-McPherson Library	\$ 126.03

WE ARE
economies
OF SCALE

WE ARE THE
support
YOU NEED

WE ARE THE
experts
IN MUNICIPALITIES

WE ARE YOUR
advocate

Village of Ryley		Statement Date:	Nov 07, 2019
PO Box 230 Ryley AB T0B 4A0	Account Number:	C001478-01	
	Invoice Number:	19-1031234	
	Balance Owning:	\$ 6,797.39	

Page 17 of 40

Service/Site:	Ryley Community Centre 0001812053212 5103 49 ST Ryley AB T0B4A0
Rate:	Low Use
In case of emergency at your site please contact your service provider ATCO Gas (North) at (780) 420-5585.	

Gas Commodity

Charges

Gas Commodity - Current (Oct 01, 2019-Oct 31, 2019)

	Usage	Price		
GAS - Admin: Imbalance Fee, B1	10.78		\$	0.00
GAS - Admin: Retail Service Charge			\$	20.00
GAS - Admin: Third Party Broker Fee, B1	34.19		\$	0.00
GAS - Block: Fixed, B1	25.37	4.44000	\$	112.65
GAS - Imbalance: Daily Index Purchase, B1	9.80		\$	23.41
GAS - Imbalance: Daily Index Sale, B1	-0.98		\$	-1.64
GAS - UFG, ATCO North, B1	0.26		\$	0.57
			\$	154.99

Gas Commodity - Prior Period Adjustments (Jun 01, 2019-Sep 30, 2019)

	Usage	Price		
ATCO Gas Imbalance	11.33	-0.01337	\$	-0.15
GAS - Admin: Imbalance Fee, S1	-0.24		\$	0.00
GAS - Admin: Imbalance Fee, S2	-0.51		\$	0.00
GAS - Admin: Imbalance Fee, S3			\$	0.00
GAS - Admin: Retail Service Charge			\$	0.00
GAS - Admin: Third Party Broker Fee, S1	-0.76		\$	0.00
GAS - Admin: Third Party Broker Fee, S2	-0.63		\$	0.00
GAS - Admin: Third Party Broker Fee, S3			\$	0.00
GAS - Block: Fixed, S1	-0.34	4.44000	\$	-1.52
GAS - Block: Fixed, S2	-0.13	4.44000	\$	-0.56
GAS - Block: Fixed, S3		4.44000	\$	0.00
GAS - Imbalance: Daily Index Purchase, S1	-0.33		\$	-0.07
GAS - Imbalance: Daily Index Purchase, S2	-0.51		\$	-0.39
GAS - Imbalance: Daily Index Purchase, S3			\$	0.00
GAS - Imbalance: Daily Index Sale, S1	-0.09		\$	-0.03
GAS - Imbalance: Daily Index Sale, S2			\$	0.00
GAS - Imbalance: Daily Index Sale, S3			\$	0.00
GAS - UFG, ATCO North, S1	-0.01		\$	0.00
GAS - UFG, ATCO North, S2	-0.00		\$	0.00
GAS - UFG, ATCO North, S3			\$	0.00
			\$	-2.72

Total Gas Commodity

\$ 152.27

19-1031234-000147

WE ARE
economies
OF SCALE

WE ARE THE
support
YOU NEED

WE ARE THE
experts
IN MUNICIPALITIES

WE ARE YOUR
advocate

Village of Ryley		Statement Date:	Nov 07, 2019
PO Box 230 Ryley AB T0B 4A0	Account Number:	C001478-01	
	Invoice Number:	19-1031234	
	Balance Owning:	\$ 6,797.39	

Page 18 of 40

Service/Site:	Ryley Community Centre 0001812053212 5103 49 ST Ryley AB T0B4A0
Rate:	Low Use
In case of emergency at your site please contact your service provider ATCO Gas (North) at (780) 420-5585.	

Gas Distribution Charges

Gas Distribution Charges - (Sep 12, 2019-Oct 07, 2019)

	Charges
GAS - Third Party: Distribution and Transmission, B1	\$ 40.10
GAS - Third Party: Municipal Franchise Fee; paid to Ryley	\$ 5.89
GAS - Third Party: Riders, B1	\$ 27.74
	<hr/>
	\$ 73.73
Total Gas Distribution Charges	\$ 73.73
GAS-Third Party: Carbon Levy	\$ 0.00
Site Subtotal:	\$ 226.00
Site GST:	\$ 11.30
Total Charges for 0001812053212-Ryley Community Centre	\$ 237.30

WE ARE
economies
OF SCALE

WE ARE THE
support
YOU NEED

WE ARE THE
experts
IN MUNICIPALITIES

WE ARE YOUR
advocate

Village of Ryley		Statement Date:	Nov 07, 2019
PO Box 230 Ryley AB T0B 4A0	Account Number:	C001478-01	
	Invoice Number:	19-1031234	
	Balance Owing:	\$ 6,797.39	

Page 19 of 40

Service/Site:	Municipal Bldg 0040001878502 5005 50 ST Village of Ryley AB X0X 0X0
Rate:	41
In case of emergency at your site please contact your service provider Fortis at 310-WIRE(9473) or 1-855-333-WIRE(9473).	

Power Commodity

				Charges
Power Commodity - Prelim (Oct 01, 2019-Oct 31, 2019)				
ELE - Admin: Retail Service Charge				\$ 20.00
ELE - Admin: Third Party Broker Fee, Prelim	1366.58			\$ 0.00
ELE - Block: 7x24 Flat, Prelim	2809.30	0.05890		\$ 165.47
ELE - Imbalance: Spot Market Purchase, Prelim				\$ 0.00
ELE - Imbalance: Spot Market Sale, Prelim	-1469.68			\$ -60.98
ELE - Third Party: Trading Charge, Prelim	1366.58	0.00046		\$ 0.63
ELE - UFE/Losses: Line Losses, Prelim	38.76			\$ 1.49
ELE - UFE/Losses: UFE, Prelim	-11.80			\$ -0.45
				\$ 126.16
Power Commodity - Initial (Sep 01, 2019-Sep 30, 2019)				
ELE - Admin: Retail Service Charge				\$ 0.00
ELE - Admin: Third Party Broker Fee, Initial	-77.04			\$ 0.00
ELE - Block: 7x24 Flat, Initial	-76.29	0.05890		\$ -4.49
ELE - Imbalance: Spot Market Purchase, Initial	0.70			\$ 0.02
ELE - Imbalance: Spot Market Sale, Initial	-12.40			\$ -0.63
ELE - Third Party: Trading Charge, Initial	-77.04	0.00046		\$ -0.04
ELE - UFE/Losses: Line Losses, Initial	9.93			\$ 0.36
ELE - UFE/Losses: UFE, Initial	1.02			\$ 0.12
				\$ -4.66
Power Commodity - Interim (Jul 01, 2019-Jul 31, 2019)				
ELE - Admin: Retail Service Charge				\$ 0.00
ELE - Admin: Third Party Broker Fee, Interim	-0.55			\$ 0.00
ELE - Block: 7x24 Flat, Interim	-5.83	0.05890		\$ -0.34
ELE - Imbalance: Spot Market Purchase, Interim	3.28			\$ 0.24
ELE - Imbalance: Spot Market Sale, Interim	2.91			\$ 0.09
ELE - Third Party: Trading Charge, Interim	-0.55	0.00046		\$ 0.00
ELE - UFE/Losses: Line Losses, Interim				\$ 0.00
ELE - UFE/Losses: UFE, Interim	-0.90			\$ -0.03
				\$ -0.04
Power Commodity - Final (May 01, 2019-May 31, 2019)				
ELE - Admin: Retail Service Charge				\$ 0.00
ELE - Admin: Third Party Broker Fee, Final	-1.10			\$ 0.00
ELE - Block: 7x24 Flat, Final	0.01	0.05890		\$ 0.00
ELE - Imbalance: Spot Market Purchase, Final	0.01			\$ 0.00
ELE - Imbalance: Spot Market Sale, Final	0.35			\$ 0.03
ELE - Third Party: Trading Charge, Final	-1.10	0.00046		\$ 0.00
ELE - UFE/Losses: Line Losses, Final				\$ 0.00
ELE - UFE/Losses: UFE, Final	-1.48			\$ -0.12
				\$ -0.09
Total Power Commodity				\$ 121.37

WE ARE
economies
OF SCALE

WE ARE THE
support
YOU NEED

WE ARE THE
experts
IN MUNICIPALITIES

WE ARE YOUR
advocate

Village of Ryley		Statement Date:	Nov 07, 2019
PO Box 230 Ryley AB T0B 4A0	Account Number:	C001478-01	
	Invoice Number:	19-1031234	
	Balance Owning:	\$ 6,797.39	

Page 20 of 40

Service/Site:	Municipal Bldg 0040001878502 5005 50 ST Village of Ryley AB X0X 0X0
Rate:	41
In case of emergency at your site please contact your service provider Fortis at 310-WIRE(9473) or 1-855-333-WIRE(9473).	

Distribution and Transmission

Charges

Distribution and Transmission - (Sep 06, 2019-Oct 05, 2019)			
ELE - Third Party: Distribution and Transmission	\$	126.07	
ELE - Third Party: Local Access Fee; paid to Ryley	\$	3.78	
ELE - Third Party: Riders	\$	13.16	
	\$	143.01	
Distribution and Transmission - (Sep 01, 2019-Sep 30, 2019)			
ELE - Third Party: RAM, Initial	\$	-0.01	
ELE - Third Party: Uplift, Initial	\$	0.04	
	\$	0.03	
Distribution and Transmission - (Jul 01, 2019-Jul 31, 2019)			
ELE - Third Party: Uplift, Interim	\$	0.00	
	\$	0.00	
Distribution and Transmission - (May 01, 2019-May 31, 2019)			
ELE - Third Party: RAM, Final	\$		
	\$	0.00	
Total Distribution and Transmission	\$	143.04	
Site Subtotal:	\$	264.41	
Site GST:	\$	13.22	
Total Charges for 0040001878502-Municipal Bldg	\$	277.63	

Adm. 230.04
PW 34.37

WE ARE
economies
OF SCALE

WE ARE THE
support
YOU NEED

WE ARE THE
experts
IN MUNICIPALITIES

WE ARE YOUR
advocate

Village of Ryley

Statement Date:

Nov 07, 2019

PO Box 230
Ryley AB T0B 4A0

Account Number:

C001478-01

Invoice Number:

19-1031234

Balance Owning:

\$ 6,797.39

Page 21 of 40

Service/Site: Village Shop
0040201642007
4928 51st AVE
Ryley AB T0B 4A0
Rate: 41

In case of emergency at your site please contact your service provider Fortis at 310-WIRE(9473) or 1-855-333-WIRE(9473).

Power Commodity

Charges

Power Commodity - Prelim (Oct 01, 2019-Oct 31, 2019)

	Usage	Price		
ELE - Admin: Retail Service Charge			\$	20.00
ELE - Admin: Third Party Broker Fee, Prelim	267.59		\$	0.00
ELE - Block: 7x24 Flat, Prelim	550.09	0.05890	\$	32.40
ELE - Imbalance: Spot Market Purchase, Prelim			\$	0.00
ELE - Imbalance: Spot Market Sale, Prelim	-287.78		\$	-11.94
ELE - Third Party: Trading Charge, Prelim	267.59	0.00046	\$	0.12
ELE - UFE/Losses: Line Losses, Prelim	7.59		\$	0.29
ELE - UFE/Losses: UFE, Prelim	-2.31		\$	-0.09
			\$	40.78

Power Commodity - Initial (Sep 01, 2019-Sep 30, 2019)

	Usage	Price		
ELE - Admin: Retail Service Charge			\$	0.00
ELE - Admin: Third Party Broker Fee, Initial	13.39		\$	0.00
ELE - Block: 7x24 Flat, Initial	19.51	0.05890	\$	1.15
ELE - Imbalance: Spot Market Purchase, Initial	0.28		\$	0.01
ELE - Imbalance: Spot Market Sale, Initial	-9.07		\$	-0.50
ELE - Third Party: Trading Charge, Initial	13.39	0.00046	\$	0.01
ELE - UFE/Losses: Line Losses, Initial	2.73		\$	0.12
ELE - UFE/Losses: UFE, Initial	-0.07		\$	0.01
			\$	0.80

Power Commodity - Interim (Jul 01, 2019-Jul 31, 2019)

	Usage	Price		
ELE - Admin: Retail Service Charge			\$	0.00
ELE - Admin: Third Party Broker Fee, Interim	-1.78		\$	0.00
ELE - Block: 7x24 Flat, Interim	-2.40	0.05890	\$	-0.14
ELE - Imbalance: Spot Market Purchase, Interim	0.33		\$	0.02
ELE - Imbalance: Spot Market Sale, Interim	0.47		\$	0.01
ELE - Third Party: Trading Charge, Interim	-1.78	0.00046	\$	0.00
ELE - UFE/Losses: Line Losses, Interim	-0.06		\$	0.00
ELE - UFE/Losses: UFE, Interim	-0.12		\$	0.00
			\$	-0.11

Power Commodity - Final (May 01, 2019-May 31, 2019)

	Usage	Price		
ELE - Admin: Retail Service Charge			\$	0.00
ELE - Admin: Third Party Broker Fee, Final	-0.23		\$	0.00
ELE - Block: 7x24 Flat, Final	-0.00	0.05890	\$	0.00
ELE - Imbalance: Spot Market Purchase, Final	0.00		\$	0.00
ELE - Imbalance: Spot Market Sale, Final	0.08		\$	0.01
ELE - Third Party: Trading Charge, Final	-0.23	0.00046	\$	0.00
ELE - UFE/Losses: Line Losses, Final			\$	0.00
ELE - UFE/Losses: UFE, Final	-0.30		\$	-0.02
			\$	-0.01

Total Power Commodity

\$ 41.46

WE ARE
economies
OF SCALE

WE ARE THE
support
YOU NEED

WE ARE THE
experts
IN MUNICIPALITIES

WE ARE YOUR
advocate

Village of Ryley		Statement Date:	Nov 07, 2019
PO Box 230 Ryley AB T0B 4A0	Account Number:	C001478-01	
	Invoice Number:	19-1031234	
	Balance Owning:	\$ 6,797.39	

Page 22 of 40

Service/Site:	Village Shop 0040201642007 4928 51st AVE Ryley AB T0B 4A0
Rate:	41
In case of emergency at your site please contact your service provider Fortis at 310-WIRE(9473) or 1-855-333-WIRE(9473).	

Distribution and Transmission

Distribution and Transmission - (Sep 23, 2019-Oct 22, 2019)

ELE - Third Party: Distribution and Transmission	\$	66.95
ELE - Third Party: Local Access Fee; paid to Ryley	\$	2.01
ELE - Third Party: Riders	\$	4.08
	\$	73.04

Distribution and Transmission - (Sep 01, 2019-Sep 30, 2019)

ELE - Third Party: RAM, Initial	\$	0.00
ELE - Third Party: Uplift, Initial	\$	0.01
	\$	0.01

Distribution and Transmission - (Jul 01, 2019-Jul 31, 2019)

ELE - Third Party: Uplift, Interim	\$	0.00
	\$	0.00

Distribution and Transmission - (May 01, 2019-May 31, 2019)

ELE - Third Party: RAM, Final	\$	0.00
	\$	0.00

Total Distribution and Transmission

\$ 73.05

Site Subtotal:

\$ 114.51

Site GST:

\$ 5.73

Total Charges for 0040201642007-Village Shop

\$ 120.24

WE ARE
economies
OF SCALE

WE ARE THE
support
YOU NEED

WE ARE THE
experts
IN MUNICIPALITIES

WE ARE YOUR
advocate

Village of Ryley

Statement Date:

Nov 07, 2019

PO Box 230
Ryley AB T0B 4A0

Account Number:

C001478-01

Invoice Number:

19-1031234

Balance Owning:

\$ 6,797.39

Page 23 of 40

Service/Site: McPherson Library

0040201646002

5113 50th ST

Ryley AB T0B 4A0

Rate: 41

In case of emergency at your site please contact your service provider Fortis at 310-WIRE(9473) or 1-855-333-WIRE(9473).

Power Commodity

Charges

Power Commodity - Prelim (Oct 01, 2019-Oct 31, 2019)

	Usage	Price		
ELE - Admin: Retail Service Charge			\$	20.00
ELE - Admin: Third Party Broker Fee, Prelim	697.75		\$	0.00
ELE - Block: 7x24 Flat, Prelim	1434.37	0.05890	\$	84.48
ELE - Imbalance: Spot Market Purchase, Prelim			\$	0.00
ELE - Imbalance: Spot Market Sale, Prelim	-750.39		\$	-31.13
ELE - Third Party: Trading Charge, Prelim	697.75	0.00046	\$	0.32
ELE - UFE/Losses: Line Losses, Prelim	19.79		\$	0.76
ELE - UFE/Losses: UFE, Prelim	-6.02		\$	-0.23
			\$	74.20

Power Commodity - Initial (Sep 01, 2019-Sep 30, 2019)

	Usage	Price		
ELE - Admin: Retail Service Charge			\$	0.00
ELE - Admin: Third Party Broker Fee, Initial	-14.70		\$	0.00
ELE - Block: 7x24 Flat, Initial	-8.32	0.05890	\$	-0.49
ELE - Imbalance: Spot Market Purchase, Initial	0.59		\$	0.02
ELE - Imbalance: Spot Market Sale, Initial	-13.95		\$	-0.93
ELE - Third Party: Trading Charge, Initial	-14.70	0.00046	\$	-0.01
ELE - UFE/Losses: Line Losses, Initial	6.63		\$	0.28
ELE - UFE/Losses: UFE, Initial	0.34		\$	0.05
			\$	-1.08

Power Commodity - Interim (Jul 01, 2019-Jul 31, 2019)

	Usage	Price		
ELE - Admin: Retail Service Charge			\$	0.00
ELE - Admin: Third Party Broker Fee, Interim	41.65		\$	0.00
ELE - Block: 7x24 Flat, Interim	36.97	0.05890	\$	2.18
ELE - Imbalance: Spot Market Purchase, Interim	4.39		\$	0.35
ELE - Imbalance: Spot Market Sale, Interim	-0.42		\$	-0.01
ELE - Third Party: Trading Charge, Interim	41.65	0.00046	\$	0.02
ELE - UFE/Losses: Line Losses, Interim	1.58		\$	0.09
ELE - UFE/Losses: UFE, Interim	-0.87		\$	-0.04
			\$	2.59

Power Commodity - Final (May 01, 2019-May 31, 2019)

	Usage	Price		
ELE - Admin: Retail Service Charge			\$	0.00
ELE - Admin: Third Party Broker Fee, Final	-0.57		\$	0.00
ELE - Block: 7x24 Flat, Final	0.00	0.05890	\$	0.00
ELE - Imbalance: Spot Market Purchase, Final	0.01		\$	0.00
ELE - Imbalance: Spot Market Sale, Final	0.18		\$	0.01
ELE - Third Party: Trading Charge, Final	-0.57	0.00046	\$	0.00
ELE - UFE/Losses: Line Losses, Final			\$	0.00
ELE - UFE/Losses: UFE, Final	-0.76		\$	-0.06
			\$	-0.05

Total Power Commodity

\$ 75.66

WE ARE
economies
OF SCALE

WE ARE THE
support
YOU NEED

WE ARE THE
experts
IN MUNICIPALITIES

WE ARE YOUR
advocate

Village of Ryley		Statement Date:	Nov 07, 2019
PO Box 230 Ryley AB T0B 4A0	Account Number:	C001478-01	
	Invoice Number:	19-1031234	
	Balance Owning:	\$ 6,797.39	

Page 24 of 40

Service/Site:	McPherson Library 0040201646002 5113 50th ST Ryley AB T0B 4A0
Rate:	41
In case of emergency at your site please contact your service provider Fortis at 310-WIRE(9473) or 1-855-333-WIRE(9473).	

Distribution and Transmission

Charges

Distribution and Transmission - (Sep 23, 2019-Oct 22, 2019)			
ELE - Third Party: Distribution and Transmission	\$	110.10	
ELE - Third Party: Local Access Fee; paid to Ryley	\$	3.30	
ELE - Third Party: Riders	\$	8.55	
	\$	121.95	
Distribution and Transmission - (Sep 01, 2019-Sep 30, 2019)			
ELE - Third Party: RAM, Initial	\$	0.00	
ELE - Third Party: Uplift, Initial	\$	0.02	
	\$	0.02	
Distribution and Transmission - (Jul 01, 2019-Jul 31, 2019)			
ELE - Third Party: Uplift, Interim	\$	0.00	
	\$	0.00	
Distribution and Transmission - (May 01, 2019-May 31, 2019)			
ELE - Third Party: RAM, Final	\$	0.00	
	\$	0.00	
Total Distribution and Transmission		\$	121.97
Site Subtotal:	\$	197.63	
Site GST:	\$	9.89	
Total Charges for 0040201646002-McPherson Library	\$	207.51	

WE ARE
economies
OF SCALE

WE ARE THE
support
YOU NEED

WE ARE THE
experts
IN MUNICIPALITIES

WE ARE YOUR
advocate

Village of Ryley		Statement Date:	Nov 07, 2019
PO Box 230 Ryley AB T0B 4A0	Account Number:	C001478-01	
	Invoice Number:	19-1031234	
	Balance Owing:	\$ 6,797.39	

Page 25 of 40

Service/Site: Lift Station SW 10-50-17-W4
0040201715000
SW 10-50-17-W4
SW 10 50 17 W4

Rate: 41

In case of emergency at your site please contact your service provider Fortis at 310-WIRE(9473) or 1-855-333-WIRE(9473).

Power Commodity

				Charges
Power Commodity - Prelim (Oct 01, 2019-Oct 31, 2019)				
ELE - Admin: Retail Service Charge				\$ 20.00
ELE - Admin: Third Party Broker Fee, Prelim	597.04			\$ 0.00
ELE - Block: 7x24 Flat, Prelim	1227.34	0.05890		\$ 72.29
ELE - Imbalance: Spot Market Purchase, Prelim				\$ 0.00
ELE - Imbalance: Spot Market Sale, Prelim	-642.08			\$ -26.64
ELE - Third Party: Trading Charge, Prelim	597.04	0.00046		\$ 0.27
ELE - UFE/Losses: Line Losses, Prelim	16.93			\$ 0.65
ELE - UFE/Losses: UFE, Prelim	-5.15			\$ -0.20
				\$ 66.37
Power Commodity - Initial (Sep 01, 2019-Sep 30, 2019)				
ELE - Admin: Retail Service Charge				\$ 0.00
ELE - Admin: Third Party Broker Fee, Initial	8.92			\$ 0.00
ELE - Block: 7x24 Flat, Initial	18.55	0.05890		\$ 1.09
ELE - Imbalance: Spot Market Purchase, Initial	0.57			\$ 0.02
ELE - Imbalance: Spot Market Sale, Initial	-16.15			\$ -0.95
ELE - Third Party: Trading Charge, Initial	8.92	0.00046		\$ 0.00
ELE - UFE/Losses: Line Losses, Initial	5.89			\$ 0.25
ELE - UFE/Losses: UFE, Initial	0.06			\$ 0.03
				\$ 0.44
Power Commodity - Interim (Jul 01, 2019-Jul 31, 2019)				
ELE - Admin: Retail Service Charge				\$ 0.00
ELE - Admin: Third Party Broker Fee, Interim	-112.75			\$ 0.00
ELE - Block: 7x24 Flat, Interim	-113.05	0.05890		\$ -6.66
ELE - Imbalance: Spot Market Purchase, Interim	-3.70			\$ -0.36
ELE - Imbalance: Spot Market Sale, Interim	8.29			\$ 0.25
ELE - Third Party: Trading Charge, Interim	-112.75	0.00046		\$ -0.05
ELE - UFE/Losses: Line Losses, Interim	-4.24			\$ -0.24
ELE - UFE/Losses: UFE, Interim	-0.05			\$ 0.01
				\$ -7.05
Power Commodity - Final (May 01, 2019-May 31, 2019)				
ELE - Admin: Retail Service Charge				\$ 0.00
ELE - Admin: Third Party Broker Fee, Final	-0.43			\$ 0.00
ELE - Block: 7x24 Flat, Final	0.01	0.05890		\$ 0.00
ELE - Imbalance: Spot Market Purchase, Final	0.00			\$ 0.00
ELE - Imbalance: Spot Market Sale, Final	0.14			\$ 0.01
ELE - Third Party: Trading Charge, Final	-0.43	0.00046		\$ 0.00
ELE - UFE/Losses: Line Losses, Final				\$ 0.00
ELE - UFE/Losses: UFE, Final	-0.58			\$ -0.05
				\$ -0.04
Total Power Commodity				\$ 59.72

WE ARE
economies
OF SCALE

WE ARE THE
support
YOU NEED

WE ARE THE
experts
IN MUNICIPALITIES

WE ARE YOUR
advocate

Village of Ryley		Statement Date:	Nov 07, 2019
PO Box 230 Ryley AB T0B 4A0	Account Number:	C001478-01	
	Invoice Number:	19-1031234	
	Balance Owing:	\$ 6,797.39	

Page 26 of 40

Service/Site:	Lift Station SW 10-50-17-W4 0040201715000 SW 10-50-17-W4 SW 10 50 17 W4
Rate:	41
In case of emergency at your site please contact your service provider Fortis at 310-WIRE(9473) or 1-855-333-WIRE(9473).	

Distribution and Transmission

Charges

Distribution and Transmission - (Sep 23, 2019-Oct 22, 2019)

ELE - Third Party: Distribution and Transmission	\$	83.57
ELE - Third Party: Local Access Fee; paid to Beaver County	\$	0.00
ELE - Third Party: Riders	\$	5.70
	\$	89.27

Distribution and Transmission - (Sep 01, 2019-Sep 30, 2019)

ELE - Third Party: RAM, Initial	\$	0.00
ELE - Third Party: Uplift, Initial	\$	0.02
	\$	0.02

Distribution and Transmission - (Jul 01, 2019-Jul 31, 2019)

ELE - Third Party: Uplift, Interim	\$	0.00
	\$	0.00

Distribution and Transmission - (May 01, 2019-May 31, 2019)

ELE - Third Party: RAM, Final	\$	
	\$	0.00

Total Distribution and Transmission

\$ 89.29

Site Subtotal:

\$ 149.01

Site GST:

\$ 7.45

Total Charges for 0040201715000-Lift Station SW 10-50-17-W4

\$ 156.46

WE ARE
economies
OF SCALE

WE ARE THE
support
YOU NEED

WE ARE THE
experts
IN MUNICIPALITIES

WE ARE YOUR
advocate

Village of Ryley		Statement Date:	Nov 07, 2019
PO Box 230 Ryley AB T0B 4A0	Account Number:		C001478-01
	Invoice Number:		19-1031234
	Balance Owing:		\$ 6,797.39

Page 27 of 40

Service/Site:	Lift Station, 7-31-7920397 0040201719004 Lift Station, 7-31-7920397
Rate:	41
In case of emergency at your site please contact your service provider Fortis at 310-WIRE(9473) or 1-855-333-WIRE(9473).	

Power Commodity

				Charges
Power Commodity - Prelim (Oct 01, 2019-Oct 31, 2019)				
ELE - Admin: Retail Service Charge				\$ 20.00
ELE - Admin: Third Party Broker Fee, Prelim	105.02			\$ 0.00
ELE - Block: 7x24 Flat, Prelim	215.90	0.05890		\$ 12.72
ELE - Imbalance: Spot Market Purchase, Prelim				\$ 0.00
ELE - Imbalance: Spot Market Sale, Prelim	-112.95			\$ -4.69
ELE - Third Party: Trading Charge, Prelim	105.02	0.00046		\$ 0.05
ELE - UFE/Losses: Line Losses, Prelim	2.98			\$ 0.11
ELE - UFE/Losses: UFE, Prelim	-0.91			\$ -0.03
				\$ 28.16
Power Commodity - Initial (Sep 01, 2019-Sep 30, 2019)				
ELE - Admin: Retail Service Charge				\$ 0.00
ELE - Admin: Third Party Broker Fee, Initial	2.04			\$ 0.00
ELE - Block: 7x24 Flat, Initial	4.05	0.05890		\$ 0.24
ELE - Imbalance: Spot Market Purchase, Initial	0.12			\$ 0.00
ELE - Imbalance: Spot Market Sale, Initial	-3.35			\$ -0.20
ELE - Third Party: Trading Charge, Initial	2.04	0.00046		\$ 0.00
ELE - UFE/Losses: Line Losses, Initial	1.21			\$ 0.05
ELE - UFE/Losses: UFE, Initial	0.01			\$ 0.01
				\$ 0.10
Power Commodity - Interim (Jul 01, 2019-Jul 31, 2019)				
ELE - Admin: Retail Service Charge				\$ 0.00
ELE - Admin: Third Party Broker Fee, Interim	-29.91			\$ 0.00
ELE - Block: 7x24 Flat, Interim	-29.91	0.05890		\$ -1.76
ELE - Imbalance: Spot Market Purchase, Interim	-1.03			\$ -0.10
ELE - Imbalance: Spot Market Sale, Interim	2.16			\$ 0.07
ELE - Third Party: Trading Charge, Interim	-29.91	0.00046		\$ -0.01
ELE - UFE/Losses: Line Losses, Interim	-1.12			\$ -0.06
ELE - UFE/Losses: UFE, Interim	0.00			\$ 0.00
				\$ -1.86
Power Commodity - Final (May 01, 2019-May 31, 2019)				
ELE - Admin: Retail Service Charge				\$ 0.00
ELE - Admin: Third Party Broker Fee, Final	-0.09			\$ 0.00
ELE - Block: 7x24 Flat, Final	-0.03	0.05890		\$ 0.00
ELE - Imbalance: Spot Market Purchase, Final	0.00			\$ 0.00
ELE - Imbalance: Spot Market Sale, Final	0.03			\$ 0.00
ELE - Third Party: Trading Charge, Final	-0.09	0.00046		\$ 0.00
ELE - UFE/Losses: Line Losses, Final				\$ 0.00
ELE - UFE/Losses: UFE, Final	-0.09			\$ -0.01
				\$ -0.01
Total Power Commodity				\$ 26.39

WE ARE
economies
OF SCALE

WE ARE THE
support
YOU NEED

WE ARE THE
experts
IN MUNICIPALITIES

WE ARE YOUR
advocate

Village of Ryley		Statement Date:	Nov 07, 2019
PO Box 230 Ryley AB T0B 4A0	Account Number:	C001478-01	
	Invoice Number:	19-1031234	
	Balance Owning:	\$ 6,797.39	

Page 28 of 40

Service/Site:	Lift Station, 7-31-7920397 0040201719004 Lift Station, 7-31-7920397
Rate:	41
In case of emergency at your site please contact your service provider Fortis at 310-WIRE(9473) or 1-855-333-WIRE(9473).	

Distribution and Transmission

Charges

Distribution and Transmission - (Sep 23, 2019-Oct 22, 2019)			
ELE - Third Party: Distribution and Transmission	\$	64.08	
ELE - Third Party: Local Access Fee; paid to Ryley	\$	1.92	
ELE - Third Party: Riders	\$	2.86	
	\$	68.86	
Distribution and Transmission - (Sep 01, 2019-Sep 30, 2019)			
ELE - Third Party: RAM, Initial	\$	0.00	
ELE - Third Party: Uplift, Initial	\$	0.00	
	\$	0.00	
Distribution and Transmission - (Jul 01, 2019-Jul 31, 2019)			
ELE - Third Party: Uplift, Interim	\$	0.00	
	\$	0.00	
Distribution and Transmission - (May 01, 2019-May 31, 2019)			
ELE - Third Party: RAM, Final	\$		
	\$	0.00	
Total Distribution and Transmission	\$	68.86	
Site Subtotal:	\$	95.25	
Site GST:	\$	4.77	
Total Charges for 0040201719004-Lift Station, 7-31-7920397	\$	100.01	

WE ARE
economies
OF SCALE

WE ARE THE
support
YOU NEED

WE ARE THE
experts
IN MUNICIPALITIES

WE ARE YOUR
advocate

Village of Ryley		Statement Date:	Nov 07, 2019
PO Box 230 Ryley AB T0B 4A0	Account Number:		C001478-01
	Invoice Number:		19-1031234
	Balance Owing:		\$ 6,797.39

Page 29 of 40

Service/Site:	Ryley Community Centre 0040201740004 5103 49th ST Ryley AB T0B 4A0
Rate:	41
In case of emergency at your site please contact your service provider Fortis at 310-WIRE(9473) or 1-855-333-WIRE(9473).	

Power Commodity

Power Commodity - Prelim (Oct 01, 2019-Oct 31, 2019)

	Usage	Price	Charges	
ELE - Admin: Retail Service Charge			\$	20.00
ELE - Admin: Third Party Broker Fee, Prelim	1873.14		\$	0.00
ELE - Block: 7x24 Flat, Prelim	3850.62	0.05890	\$	226.80
ELE - Imbalance: Spot Market Purchase, Prelim			\$	0.00
ELE - Imbalance: Spot Market Sale, Prelim	-2014.44		\$	-83.58
ELE - Third Party: Trading Charge, Prelim	1873.14	0.00046	\$	0.86
ELE - UFE/Losses: Line Losses, Prelim	53.13		\$	2.04
ELE - UFE/Losses: UFE, Prelim	-16.17		\$	-0.61
			\$	165.51

Power Commodity - Initial (Sep 01, 2019-Sep 30, 2019)

	Usage	Price		
ELE - Admin: Retail Service Charge			\$	0.00
ELE - Admin: Third Party Broker Fee, Initial	-93.15		\$	0.00
ELE - Block: 7x24 Flat, Initial	-93.66	0.05890	\$	-5.52
ELE - Imbalance: Spot Market Purchase, Initial	0.93		\$	0.03
ELE - Imbalance: Spot Market Sale, Initial	-13.72		\$	-1.30
ELE - Third Party: Trading Charge, Initial	-93.15	0.00046	\$	-0.04
ELE - UFE/Losses: Line Losses, Initial	11.93		\$	0.51
ELE - UFE/Losses: UFE, Initial	1.36		\$	0.14
			\$	-6.18

Power Commodity - Interim (Jul 01, 2019-Jul 31, 2019)

	Usage	Price		
ELE - Admin: Retail Service Charge			\$	0.00
ELE - Admin: Third Party Broker Fee, Interim	239.46		\$	0.00
ELE - Block: 7x24 Flat, Interim	226.99	0.05890	\$	13.37
ELE - Imbalance: Spot Market Purchase, Interim	16.13		\$	1.37
ELE - Imbalance: Spot Market Sale, Interim	-10.40		\$	-0.31
ELE - Third Party: Trading Charge, Interim	239.46	0.00046	\$	0.11
ELE - UFE/Losses: Line Losses, Interim	9.06		\$	0.51
ELE - UFE/Losses: UFE, Interim	-2.32		\$	-0.11
			\$	14.94

Power Commodity - Final (May 01, 2019-May 31, 2019)

	Usage	Price		
ELE - Admin: Retail Service Charge			\$	0.00
ELE - Admin: Third Party Broker Fee, Final	-1.81		\$	0.00
ELE - Block: 7x24 Flat, Final	0.01	0.05890	\$	0.00
ELE - Imbalance: Spot Market Purchase, Final	0.03		\$	0.01
ELE - Imbalance: Spot Market Sale, Final	0.54		\$	0.05
ELE - Third Party: Trading Charge, Final	-1.81	0.00046	\$	0.00
ELE - UFE/Losses: Line Losses, Final			\$	0.00
ELE - UFE/Losses: UFE, Final	-2.40		\$	-0.25
			\$	-0.19

Total Power Commodity

\$ 174.08

1 481 - - 20 - 6 - 16 - - 000159

WE ARE
economies
OF SCALE

WE ARE THE
support
YOU NEED

WE ARE THE
experts
IN MUNICIPALITIES

WE ARE YOUR
advocate

Village of Ryley		Statement Date:	Nov 07, 2019
PO Box 230 Ryley AB T0B 4A0	Account Number:	C001478-01	
	Invoice Number:	19-1031234	
	Balance Owning:	\$ 6,797.39	

Page 30 of 40

Service/Site:	Ryley Community Centre 0040201740004 5103 49th ST Ryley AB T0B 4A0
Rate:	41
In case of emergency at your site please contact your service provider Fortis at 310-WIRE(9473) or 1-855-333-WIRE(9473).	

Distribution and Transmission

Charges

Distribution and Transmission - (Sep 23, 2019-Oct 22, 2019)			
ELE - Third Party: Distribution and Transmission	\$	403.91	
ELE - Third Party: Local Access Fee; paid to Ryley	\$	12.12	
ELE - Third Party: Riders	\$	26.09	
	\$	442.12	
Distribution and Transmission - (Sep 01, 2019-Sep 30, 2019)			
ELE - Third Party: RAM, Initial	\$	-0.01	
ELE - Third Party: Uplift, Initial	\$	0.04	
	\$	0.03	
Distribution and Transmission - (Jul 01, 2019-Jul 31, 2019)			
ELE - Third Party: Uplift, Interim	\$	0.01	
	\$	0.01	
Distribution and Transmission - (May 01, 2019-May 31, 2019)			
ELE - Third Party: RAM, Final	\$		
	\$	0.00	
Total Distribution and Transmission	\$	442.16	
Site Subtotal:	\$	616.24	
Site GST:	\$	30.81	
Total Charges for 0040201740004-Ryley Community Centre	\$	647.05	

WE ARE
economies
OF SCALE

WE ARE THE
support
YOU NEED

WE ARE THE
experts
IN MUNICIPALITIES

WE ARE YOUR
advocate

Village of Ryley

Statement Date:

Nov 07, 2019

PO Box 230
Ryley AB T0B 4A0

Account Number:

C001478-01

Invoice Number:

19-1031234

Balance Owning:

\$ 6,797.39

Page 31 of 40

Service/Site: Museum
0040201741005
5110 49 ST
Ryley AB T0B 4A0
Rate: 41

In case of emergency at your site please contact your service provider Fortis at 310-WIRE(9473) or 1-855-333-WIRE(9473).

Power Commodity

Charges

Power Commodity - Prelim (Oct 01, 2019-Oct 31, 2019)

	Usage	Price		
ELE - Admin: Retail Service Charge			\$	20.00
ELE - Admin: Third Party Broker Fee, Prelim	1.47		\$	0.00
ELE - Block: 7x24 Flat, Prelim	2.96	0.05890	\$	0.17
ELE - Imbalance: Spot Market Purchase, Prelim			\$	0.00
ELE - Imbalance: Spot Market Sale, Prelim	-1.55		\$	-0.06
ELE - Third Party: Trading Charge, Prelim	1.47	0.00046	\$	0.00
ELE - UFE/Losses: Line Losses, Prelim	0.06		\$	0.00
ELE - UFE/Losses: UFE, Prelim			\$	0.00
			\$	20.11

Power Commodity - Initial (Sep 01, 2019-Sep 30, 2019)

	Usage	Price		
ELE - Admin: Retail Service Charge			\$	0.00
ELE - Admin: Third Party Broker Fee, Initial	3.09		\$	0.00
ELE - Block: 7x24 Flat, Initial	3.80	0.05890	\$	0.22
ELE - Imbalance: Spot Market Purchase, Initial	0.02		\$	0.00
ELE - Imbalance: Spot Market Sale, Initial	-0.82		\$	-0.04
ELE - Third Party: Trading Charge, Initial	3.09	0.00046	\$	0.00
ELE - UFE/Losses: Line Losses, Initial	0.12		\$	0.01
ELE - UFE/Losses: UFE, Initial	-0.03		\$	0.00
			\$	0.19

Power Commodity - Interim (Jul 01, 2019-Jul 31, 2019)

	Usage	Price		
ELE - Admin: Retail Service Charge			\$	0.00
ELE - Admin: Third Party Broker Fee, Interim	-31.60		\$	0.00
ELE - Block: 7x24 Flat, Interim	-32.07	0.05890	\$	-1.89
ELE - Imbalance: Spot Market Purchase, Interim	-0.80		\$	-0.08
ELE - Imbalance: Spot Market Sale, Interim	2.54		\$	0.08
ELE - Third Party: Trading Charge, Interim	-31.60	0.00046	\$	-0.01
ELE - UFE/Losses: Line Losses, Interim	-1.19		\$	-0.07
ELE - UFE/Losses: UFE, Interim	-0.09		\$	0.00
			\$	-1.97

Power Commodity - Final (May 01, 2019-May 31, 2019)

	Usage	Price		
ELE - Admin: Retail Service Charge			\$	0.00
ELE - Admin: Third Party Broker Fee, Final	-0.01		\$	0.00
ELE - Block: 7x24 Flat, Final	-0.00	0.05890	\$	0.00
ELE - Imbalance: Spot Market Purchase, Final			\$	0.00
ELE - Imbalance: Spot Market Sale, Final	0.00		\$	0.00
ELE - Third Party: Trading Charge, Final	-0.01	0.00046	\$	0.00
ELE - UFE/Losses: Line Losses, Final			\$	0.00
ELE - UFE/Losses: UFE, Final	-0.01		\$	0.00
			\$	0.00

Total Power Commodity

\$ 18.33

WE ARE
economics
OF SCALE

WE ARE THE
support
YOU NEED

WE ARE THE
experts
IN MUNICIPALITIES

WE ARE YOUR
advocate

Village of Ryley		Statement Date:	Nov 07, 2019
PO Box 230 Ryley AB T0B 4A0	Account Number:	C001478-01	
	Invoice Number:	19-1031234	
	Balance Owning:	\$ 6,797.39	

Page 32 of 40

Service/Site:	Museum 0040201741005 5110 49 ST Ryley AB T0B 4A0
Rate:	41
In case of emergency at your site please contact your service provider Fortis at 310-WIRE(9473) or 1-855-333-WIRE(9473).	

Distribution and Transmission

Charges

Distribution and Transmission - (Sep 23, 2019-Oct 22, 2019)

ELE - Third Party: Distribution and Transmission	\$	134.39
ELE - Third Party: Local Access Fee; paid to Ryley	\$	4.04
ELE - Third Party: Riders	\$	4.67
	\$	143.10

Distribution and Transmission - (Sep 01, 2019-Sep 30, 2019)

ELE - Third Party: RAM, Initial	\$	0.00
ELE - Third Party: Uplift, Initial	\$	0.00
	\$	0.00

Distribution and Transmission - (Jul 01, 2019-Jul 31, 2019)

ELE - Third Party: Uplift, Interim	\$	0.00
	\$	0.00

Distribution and Transmission - (May 01, 2019-May 31, 2019)

ELE - Third Party: RAM, Final	\$	0.00
	\$	0.00

Total Distribution and Transmission

\$ 143.10

Site Subtotal:

\$ 161.43

Site GST:

\$ 8.07

Total Charges for 0040201741005-Museum

\$ 169.50

WE ARE
economies
OF SCALE

WE ARE THE
support
YOU NEED

WE ARE THE
experts
IN MUNICIPALITIES

WE ARE YOUR
advocate

Village of Ryley

Statement Date:

Nov 07, 2019

PO Box 230
Ryley AB T0B 4A0

Account Number:

C001478-01

Invoice Number:

19-1031234

Balance Owing:

\$ 6,797.39

Page 33 of 40

Service/Site: Curling Rink
0040201742006
Curling Club pays directly
5117 49th ST
Ryley AB T0B 4A0

Rate: 41

In case of emergency at your site please contact your service provider Fortis at 310-WIRE(9473) or 1-855-333-WIRE(9473).

Power Commodity

Charges

Power Commodity - Prelim (Oct 01, 2019-Oct 31, 2019)

	Usage	Price		
ELE - Admin: Retail Service Charge			\$	20.00
ELE - Admin: Third Party Broker Fee, Prelim	3285.90		\$	0.00
ELE - Block: 7x24 Flat, Prelim	6754.85	0.05890	\$	397.86
ELE - Imbalance: Spot Market Purchase, Prelim			\$	0.00
ELE - Imbalance: Spot Market Sale, Prelim	-3533.78		\$	-146.62
ELE - Third Party: Trading Charge, Prelim	3285.90	0.00046	\$	1.51
ELE - UFE/Losses: Line Losses, Prelim	93.20		\$	3.57
ELE - UFE/Losses: UFE, Prelim	-28.37		\$	-1.08
			\$	275.24

Power Commodity - Initial (Sep 01, 2019-Sep 30, 2019)

	Usage	Price		
ELE - Admin: Retail Service Charge			\$	0.00
ELE - Admin: Third Party Broker Fee, Initial	221.04		\$	0.00
ELE - Block: 7x24 Flat, Initial	300.79	0.05890	\$	17.72
ELE - Imbalance: Spot Market Purchase, Initial	3.19		\$	0.11
ELE - Imbalance: Spot Market Sale, Initial	-110.62		\$	-5.76
ELE - Third Party: Trading Charge, Initial	221.04	0.00046	\$	0.10
ELE - UFE/Losses: Line Losses, Initial	29.33		\$	1.25
ELE - UFE/Losses: UFE, Initial	-1.65		\$	0.03
			\$	13.45

Power Commodity - Interim (Jul 01, 2019-Jul 31, 2019)

	Usage	Price		
ELE - Admin: Retail Service Charge			\$	0.00
ELE - Admin: Third Party Broker Fee, Interim	2.15		\$	0.00
ELE - Block: 7x24 Flat, Interim	-4.99	0.05890	\$	-0.29
ELE - Imbalance: Spot Market Purchase, Interim	4.57		\$	0.34
ELE - Imbalance: Spot Market Sale, Interim	3.77		\$	0.12
ELE - Third Party: Trading Charge, Interim	2.15	0.00046	\$	0.00
ELE - UFE/Losses: Line Losses, Interim	0.11		\$	0.01
ELE - UFE/Losses: UFE, Interim	-1.32		\$	-0.05
			\$	0.13

Power Commodity - Final (May 01, 2019-May 31, 2019)

	Usage	Price		
ELE - Admin: Retail Service Charge			\$	0.00
ELE - Admin: Third Party Broker Fee, Final	-1.88		\$	0.00
ELE - Block: 7x24 Flat, Final	0.02	0.05890	\$	0.00
ELE - Imbalance: Spot Market Purchase, Final	0.02		\$	0.00
ELE - Imbalance: Spot Market Sale, Final	0.61		\$	0.04
ELE - Third Party: Trading Charge, Final	-1.88	0.00046	\$	0.00
ELE - UFE/Losses: Line Losses, Final			\$	0.00
ELE - UFE/Losses: UFE, Final	-2.53		\$	-0.20
			\$	-0.16

Total Power Commodity

\$ 288.66

HR1 - 20 - 4 - 14 - 000163

WE ARE
economies
OF SCALE

WE ARE THE
support
YOU NEED

WE ARE THE
experts
IN MUNICIPALITIES

WE ARE YOUR
advocate

Village of Ryley		Statement Date:	Nov 07, 2019
PO Box 230 Ryley AB T0B 4A0	Account Number:	C001478-01	
	Invoice Number:	19-1031234	
	Balance Owning:	\$ 6,797.39	

Page 34 of 40

Service/Site:	Curling Rink 0040201742006 Curling Club pays directly 5117 49th ST Ryley AB T0B 4A0
Rate:	41
In case of emergency at your site please contact your service provider Fortis at 310-WIRE(9473) or 1-855-333-WIRE(9473).	

Distribution and Transmission

Charges

Distribution and Transmission - (Sep 23, 2019-Oct 22, 2019)

ELE - Third Party: Distribution and Transmission	\$	262.90
ELE - Third Party: Local Access Fee; paid to Ryley	\$	7.88
ELE - Third Party: Riders	\$	31.53
	\$	302.31

Distribution and Transmission - (Sep 01, 2019-Sep 30, 2019)

ELE - Third Party: RAM, Initial	\$	-0.02
ELE - Third Party: Uplift, Initial	\$	0.07
	\$	0.05

Distribution and Transmission - (Jul 01, 2019-Jul 31, 2019)

ELE - Third Party: Uplift, Interim	\$	0.00
	\$	

Distribution and Transmission - (May 01, 2019-May 31, 2019)

ELE - Third Party: RAM, Final	\$	0.00
	\$	0.00

Total Distribution and Transmission

\$ 302.36

Site Subtotal:

\$ 591.02

Site GST:

\$ 29.56

Total Charges for 0040201742006-Curling Rink

\$ 620.57

WE ARE
economies
OF SCALE

WE ARE THE
support
YOU NEED

WE ARE THE
experts
IN MUNICIPALITIES

WE ARE YOUR
advocate

Village of Ryley		Statement Date:	Nov 07, 2019
PO Box 230 Ryley AB T0B 4A0	Account Number:		C001478-01
	Invoice Number:		19-1031234
	Balance Owing:		\$ 6,797.39

Page 35 of 40

Service/Site: Skating Rink
0040201743007
4835 53 AVE
Ryley AB T0B 4A0
Rate: 41

In case of emergency at your site please contact your service provider Fortis at 310-WIRE(9473) or 1-855-333-WIRE(9473).

Power Commodity

				Charges
Power Commodity - Prelim (Oct 01, 2019-Oct 31, 2019)				
ELE - Admin: Retail Service Charge				\$ 20.00
ELE - Admin: Third Party Broker Fee, Prelim	64.74			\$ 0.00
ELE - Block: 7x24 Flat, Prelim	133.09	0.05890		\$ 7.84
ELE - Imbalance: Spot Market Purchase, Prelim				\$ 0.00
ELE - Imbalance: Spot Market Sale, Prelim	-69.62			\$ -2.89
ELE - Third Party: Trading Charge, Prelim	64.74	0.00046		\$ 0.03
ELE - UFE/Losses: Line Losses, Prelim	1.84			\$ 0.07
ELE - UFE/Losses: UFE, Prelim	-0.56			\$ -0.02
				\$ 25.03
Power Commodity - Initial (Sep 01, 2019-Sep 30, 2019)				
ELE - Admin: Retail Service Charge				\$ 0.00
ELE - Admin: Third Party Broker Fee, Initial	-19.60			\$ 0.00
ELE - Block: 7x24 Flat, Initial	-21.80	0.05890		\$ -1.28
ELE - Imbalance: Spot Market Purchase, Initial				\$ 0.00
ELE - Imbalance: Spot Market Sale, Initial	0.93			\$ -0.04
ELE - Third Party: Trading Charge, Initial	-19.60	0.00046		\$ -0.01
ELE - UFE/Losses: Line Losses, Initial	0.98			\$ 0.04
ELE - UFE/Losses: UFE, Initial	0.24			\$ 0.02
				\$ -1.27
Power Commodity - Interim (Jul 01, 2019-Jul 31, 2019)				
ELE - Admin: Retail Service Charge				\$ 0.00
ELE - Admin: Third Party Broker Fee, Interim	-1.10			\$ 0.00
ELE - Block: 7x24 Flat, Interim	-1.40	0.05890		\$ -0.08
ELE - Imbalance: Spot Market Purchase, Interim				\$ 0.01
ELE - Imbalance: Spot Market Sale, Interim	0.24			\$ 0.01
ELE - Third Party: Trading Charge, Interim	-1.10	0.00046		\$ 0.00
ELE - UFE/Losses: Line Losses, Interim	-0.04			\$ 0.00
ELE - UFE/Losses: UFE, Interim	-0.06			\$ 0.00
				\$ -0.06
Power Commodity - Final (May 01, 2019-May 31, 2019)				
ELE - Admin: Retail Service Charge				\$ 0.00
ELE - Admin: Third Party Broker Fee, Final	-0.04			\$ 0.00
ELE - Block: 7x24 Flat, Final	-0.01	0.05890		\$ 0.00
ELE - Imbalance: Spot Market Purchase, Final				\$ 0.00
ELE - Imbalance: Spot Market Sale, Final	0.01			\$ 0.00
ELE - Third Party: Trading Charge, Final	-0.04	0.00046		\$ 0.00
ELE - UFE/Losses: Line Losses, Final				\$ 0.00
ELE - UFE/Losses: UFE, Final	-0.04			\$ 0.00
				\$ 0.00
Total Power Commodity				\$ 23.70

10 481 - - 20 - 3 - 13 - - 000165

WE ARE
economies
OF SCALE

WE ARE THE
support
YOU NEED

WE ARE THE
experts
IN MUNICIPALITIES

WE ARE YOUR
advocate

Village of Ryley		Statement Date:	Nov 07, 2019
PO Box 230 Ryley AB T0B 4A0	Account Number:	C001478-01	
	Invoice Number:	19-1031234	
	Balance Owing:	\$ 6,797.39	

Page 36 of 40

Service/Site:	Skating Rink 0040201743007 4835 53 AVE Ryley AB T0B 4A0
Rate:	41
In case of emergency at your site please contact your service provider Fortis at 310-WIRE(9473) or 1-855-333-WIRE(9473).	

Distribution and Transmission

Charges

Distribution and Transmission - (Sep 23, 2019-Oct 22, 2019)			
ELE - Third Party: Distribution and Transmission	\$	63.44	
ELE - Third Party: Local Access Fee; paid to Ryley	\$	1.90	
ELE - Third Party: Riders	\$	2.60	
	\$	67.94	
Distribution and Transmission - (Sep 01, 2019-Sep 30, 2019)			
ELE - Third Party: RAM, Initial	\$	0.00	
ELE - Third Party: Uplift, Initial	\$	0.00	
	\$	0.00	
Distribution and Transmission - (Jul 01, 2019-Jul 31, 2019)			
ELE - Third Party: Uplift, Interim	\$	0.00	
	\$	0.00	
Distribution and Transmission - (May 01, 2019-May 31, 2019)			
ELE - Third Party: RAM, Final	\$	0.00	
	\$	0.00	
Total Distribution and Transmission	\$	67.94	
Site Subtotal:	\$	91.64	
Site GST:	\$	4.58	
Total Charges for 0040201743007-Skating Rink	\$	96.22	

WE ARE
economies
OF SCALE

WE ARE THE
support
YOU NEED

WE ARE THE
experts
IN MUNICIPALITIES

WE ARE YOUR
advocate

Village of Ryley		Statement Date:	Nov 07, 2019
PO Box 230 Ryley AB T0B 4A0	Account Number:	C001478-01	
	Invoice Number:	19-1031234	
	Balance Owing:	\$ 6,797.39	

Page 37 of 40

Service/Site:	RV Park, 51 Ave, Ryley AB T0B 4A0 0040466059002 PO Box 230 Ryley AB T0B 4A0
Rate:	41
In case of emergency at your site please contact your service provider Fortis at 310-WIRE(9473) or 1-855-333-WIRE(9473).	

Power Commodity

Charges

Power Commodity - Prelim (Oct 01, 2019-Oct 31, 2019)

	Usage	Price		
ELE - Admin: Retail Service Charge			\$	20.00
ELE - Admin: Third Party Broker Fee, Prelim	853.13		\$	0.00
ELE - Block: 7x24 Flat, Prelim	1753.78	0.05890	\$	103.30
ELE - Imbalance: Spot Market Purchase, Prelim			\$	0.00
ELE - Imbalance: Spot Market Sale, Prelim	-917.48		\$	-38.07
ELE - Third Party: Trading Charge, Prelim	853.13	0.00046	\$	0.39
ELE - UFE/Losses: Line Losses, Prelim	24.20		\$	0.93
ELE - UFE/Losses: UFE, Prelim	-7.36		\$	-0.28
			\$	86.27

Power Commodity - Initial (Sep 01, 2019-Sep 30, 2019)

	Usage	Price		
ELE - Admin: Retail Service Charge			\$	0.00
ELE - Admin: Third Party Broker Fee, Initial	-108.70		\$	0.00
ELE - Block: 7x24 Flat, Initial	-122.91	0.05890	\$	-7.24
ELE - Imbalance: Spot Market Purchase, Initial	0.15		\$	0.00
ELE - Imbalance: Spot Market Sale, Initial	8.80		\$	0.02
ELE - Third Party: Trading Charge, Initial	-108.70	0.00046	\$	-0.05
ELE - UFE/Losses: Line Losses, Initial	3.94		\$	0.17
ELE - UFE/Losses: UFE, Initial	1.31		\$	0.10
			\$	-7.00

Power Commodity - Interim (Jul 01, 2019-Jul 31, 2019)

	Usage	Price		
ELE - Admin: Retail Service Charge			\$	0.00
ELE - Admin: Third Party Broker Fee, Interim	-70.00		\$	0.00
ELE - Block: 7x24 Flat, Interim	-71.87	0.05890	\$	-4.23
ELE - Imbalance: Spot Market Purchase, Interim	-1.24		\$	-0.15
ELE - Imbalance: Spot Market Sale, Interim	6.08		\$	0.19
ELE - Third Party: Trading Charge, Interim	-70.00	0.00046	\$	-0.03
ELE - UFE/Losses: Line Losses, Interim	-2.62		\$	-0.15
ELE - UFE/Losses: UFE, Interim	-0.34		\$	0.00
			\$	-4.37

Power Commodity - Final (May 01, 2019-May 31, 2019)

	Usage	Price		
ELE - Admin: Retail Service Charge			\$	0.00
ELE - Admin: Third Party Broker Fee, Final	-0.26		\$	0.00
ELE - Block: 7x24 Flat, Final	-0.01	0.05890	\$	0.00
ELE - Imbalance: Spot Market Purchase, Final	0.00		\$	0.00
ELE - Imbalance: Spot Market Sale, Final	0.08		\$	0.01
ELE - Third Party: Trading Charge, Final	-0.26	0.00046	\$	0.00
ELE - UFE/Losses: Line Losses, Final			\$	0.00
ELE - UFE/Losses: UFE, Final	-0.34		\$	-0.03
			\$	-0.02

Total Power Commodity

\$ 74.88

1000147

WE ARE
economies
OF SCALE

WE ARE THE
support
YOU NEED

WE ARE THE
experts
IN MUNICIPALITIES

WE ARE YOUR
advocate

Village of Ryley		Statement Date:	Nov 07, 2019
PO Box 230 Ryley AB T0B 4A0	Account Number:	C001478-01	
	Invoice Number:	19-1031234	
	Balance Owing:	\$ 6,797.39	

Page 38 of 40

Service/Site:	RV Park, 51 Ave, Ryley AB T0B 4A0 0040466059002 PO Box 230 Ryley AB T0B 4A0
Rate:	41
In case of emergency at your site please contact your service provider Fortis at 310-WIRE(9473) or 1-855-333-WIRE(9473).	

Distribution and Transmission

Charges

Distribution and Transmission - (Sep 23, 2019-Oct 22, 2019)

ELE - Third Party: Distribution and Transmission	\$	104.52
ELE - Third Party: Local Access Fee; paid to Ryley	\$	3.14
ELE - Third Party: Riders	\$	8.61
	\$	116.27

Distribution and Transmission - (Sep 01, 2019-Sep 30, 2019)

ELE - Third Party: RAM, Initial	\$	0.00
ELE - Third Party: Uplift, Initial	\$	0.02
	\$	0.02

Distribution and Transmission - (Jul 01, 2019-Jul 31, 2019)

ELE - Third Party: Uplift, Interim	\$	0.00
	\$	0.00

Distribution and Transmission - (May 01, 2019-May 31, 2019)

ELE - Third Party: RAM, Final	\$	
	\$	0.00

Total Distribution and Transmission

\$ 116.29

Site Subtotal:

\$ 191.17

Site GST:

\$ 9.56

Total Charges for 0040466059002-RV Park, 51 Ave, Ryley AB T0B 4A0

\$ 200.73

WE ARE
economies
OF SCALE

WE ARE THE
support
YOU NEED

WE ARE THE
experts
IN MUNICIPALITIES

WE ARE YOUR
advocate

Village of Ryley		Statement Date:	Nov 07, 2019
PO Box 230 Ryley AB T0B 4A0	Account Number:	C001478-01	
	Invoice Number:	19-1031234	
	Balance Owing:	\$ 6,797.39	

Page 39 of 40

Service/Site: Fortis Lights
0040V1SL62112

Rate:

In case of emergency at your site please contact your service provider Fortis at 310-WIRE(9473) or 1-855-333-WIRE(9473).

Power Commodity

				Charges
Power Commodity - Prelim (Oct 01, 2019-Oct 31, 2019)				
ELE - Admin: Retail Service Charge				\$ 40.00
ELE - Admin: Third Party Broker Fee, Prelim	1877.62			\$ 0.00
ELE - Block: 7x24 Flat, Prelim	3587.70	0.05890		\$ 211.32
ELE - Imbalance: Spot Market Purchase, Prelim				\$ 0.00
ELE - Imbalance: Spot Market Sale, Prelim	-1737.08			\$ -70.65
ELE - Third Party: Trading Charge, Prelim	1877.62	0.00046		\$ 0.86
ELE - UFE/Losses: Line Losses, Prelim	42.56			\$ 1.58
ELE - UFE/Losses: UFE, Prelim	-15.57			\$ -0.57
				\$ 182.54
Power Commodity - Initial (Sep 01, 2019-Sep 30, 2019)				
ELE - Admin: Retail Service Charge				\$ 0.00
ELE - Admin: Third Party Broker Fee, Initial	22.03			\$ 0.00
ELE - Block: 7x24 Flat, Initial	-23.74	0.05890		\$ -1.40
ELE - Imbalance: Spot Market Purchase, Initial	3.30			\$ 0.11
ELE - Imbalance: Spot Market Sale, Initial	29.95			\$ 1.76
ELE - Third Party: Trading Charge, Initial	22.03	0.00046		\$ 0.01
ELE - UFE/Losses: Line Losses, Initial	12.44			\$ 0.40
ELE - UFE/Losses: UFE, Initial	0.08			\$ 0.02
				\$ 0.90
Power Commodity - Interim (Jul 01, 2019-Jul 31, 2019)				
ELE - Admin: Retail Service Charge				\$ 0.00
ELE - Admin: Third Party Broker Fee, Interim	-0.58			\$ 0.00
ELE - Block: 7x24 Flat, Interim	-2.44	0.05890		\$ -0.14
ELE - Imbalance: Spot Market Purchase, Interim	1.94			\$ 0.06
ELE - Imbalance: Spot Market Sale, Interim	0.70			\$ 0.02
ELE - Third Party: Trading Charge, Interim	-0.58	0.00046		\$ 0.00
ELE - UFE/Losses: Line Losses, Interim				\$ 0.00
ELE - UFE/Losses: UFE, Interim	-0.78			\$ -0.02
				\$ -0.08
Power Commodity - Final (May 01, 2019-May 31, 2019)				
ELE - Admin: Retail Service Charge				\$ 0.00
ELE - Admin: Third Party Broker Fee, Final	-1.05			\$ 0.00
ELE - Block: 7x24 Flat, Final	0.00	0.05890		\$ 0.00
ELE - Imbalance: Spot Market Purchase, Final	0.03			\$ 0.00
ELE - Imbalance: Spot Market Sale, Final	0.26			\$ 0.01
ELE - Third Party: Trading Charge, Final	-1.05	0.00046		\$ 0.00
ELE - UFE/Losses: Line Losses, Final				\$ 0.00
ELE - UFE/Losses: UFE, Final	-1.34			\$ -0.04
				\$ -0.03
Total Power Commodity				\$ 183.33

WE ARE
economies
OF SCALE

WE ARE THE
support
YOU NEED

WE ARE THE
experts
IN MUNICIPALITIES

WE ARE YOUR
advocate

Village of Ryley		Statement Date:	Nov 07, 2019
PO Box 230 Ryley AB T0B 4A0	Account Number:	C001478-01	
	Invoice Number:	19-1031234	
	Balance Owing:	\$ 6,797.39	

Page 40 of 40

Service/Site:	Fortis Lights 0040V1SL62112
Rate:	In case of emergency at your site please contact your service provider Fortis at 310-WIRE(9473) or 1-855-333-WIRE(9473).

Distribution and Transmission

	Charges
Distribution and Transmission - (Oct 01, 2019-Oct 31, 2019)	
ELE - Third Party: Distribution and Transmission	\$ 2,520.42
ELE - Third Party: Local Access Fee; paid to Ryley	\$ 75.61
ELE - Third Party: Riders	\$ 77.58
	\$ 2,673.61
Distribution and Transmission - (Sep 01, 2019-Sep 30, 2019)	
ELE - Third Party: RAM, Initial	\$ -0.01
ELE - Third Party: Uplift, Initial	\$ 0.04
	\$ 0.03
Distribution and Transmission - (Jul 01, 2019-Jul 31, 2019)	
ELE - Third Party: Uplift, Interim	\$ 0.00
	\$ 0.00
Distribution and Transmission - (May 01, 2019-May 31, 2019)	
ELE - Third Party: RAM, Final	\$ 0.00
	\$ 0.00
Total Distribution and Transmission	\$ 2,673.64
Site Subtotal:	\$ 2,856.97
Site GST:	\$ 142.85
Total Charges for 0040V1SL62112-Fortis Lights	\$ 2,999.82

SITE SUMMARY

Total Site Charges	\$ 6,473.67
Total Site GST (Registration #: 862095098RT001)	\$ 323.72
Total Current Site Charges	\$ 6,797.38
Total Previous Charges	\$ 6,366.43
Less Payments	\$ 6,366.43
Balance Forward	\$ 0.00
Total Current Charges	\$ 6,797.38
Balance Owing	\$ 6,797.39